



Using Remote Service View for Confidence Monitoring. Starting from version 4.17-2, the DVStation family of products features the capability to stream a selected video service along with the associated audio stream to a remote PC or Mac, for confidence monitoring. Featuring full-frame video playback, the Remote Service View (RSV) allows you to see and hear remote TV services using a third party video player such as VLC.

## DVSTATION RSV SET UP

Select the Service View from a TSP (or TSP hybrid) port menu in the DVStation-210/DVStation-Remote/DVStation-Mini and from the verb bar in the DVStation-IP<sup>3</sup>.

Now select the service to stream from the DVStation. The service name you select will later be used to select the appropriate service on the remote PC/Mac.



Figure 1a: Select Service View in the TSP port menu for the DVStation-210/DVStation-Remote/DVStation-Mini



Figure 1b: Select Service View in DVStation-IP<sup>3</sup>

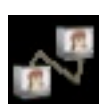


Figure 3: Select a valid video service

From the Service View, select the SVC layout by clicking on the



button until SVC is highlighted.



Click the RSV button.

From the pop-up dialog, enter the IP address of the destination PC/Mac to play out the streaming video (Figure 4).



Figure 2: Select SVC Layout

**Note:** If the "Stream All TS" option is selected, the entire TS will be forwarded to the PC. This might require high network bandwidth.



Figure 4: RSV Configuration Screen

The status of the video stream can be checked by hovering the mouse over the RSV button. RSV can be stopped by clicking on the same icon.



## PC/MAC SETUP

Open a third party media player. We will use VLC for illustration purpose in this document. VLC is freely available from the website listed below, and is available for PC, Mac and Linux platforms.

<http://www.videolan.org/vlc/>

Once the VLC player is installed and running, select File > Open Network Stream.

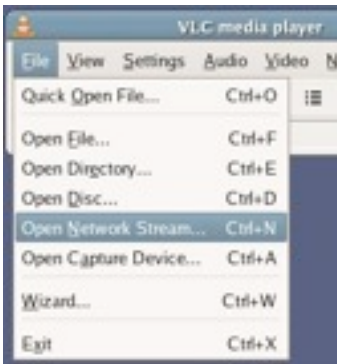


Figure 5: Open Network Stream configuration



Figure 6: Network Stream Setup

Enter the same network port you entered on the DVStation (see Figure 4).

**Note:** If caching is selected while the network stream is being set up in Figure 5, then the display of the video stream will be smoother, especially if the network throughput is not stable.

**Note:** Firewalls between the DVStation and the remote PC might block video streams. Please check with your network administrator.

If the first service was selected for RSV from the DVStation, the VLC player will start playing automatically. Otherwise, select the appropriate video service from the Navigation menu.

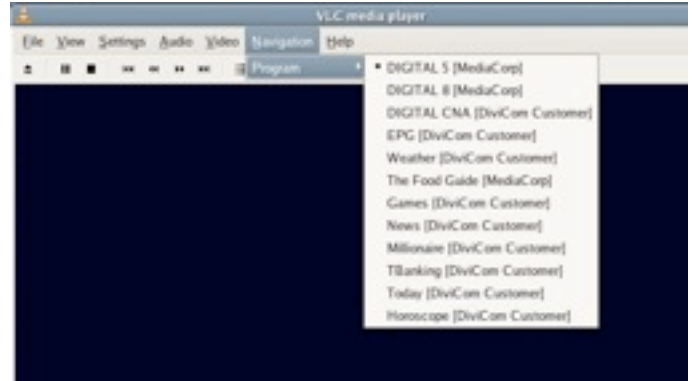


Figure 7: Selecting the appropriate service.

Select the appropriate audio stream from the Audio menu.

### For More Information

To learn more about our Test, Measurement & Monitoring solutions, request for a demo, or learn how Pixelmetrix might help you optimize video network integrity, contact us today!

### Pixelmetrix Corporation

31 Kaki Bukit Road 3  
#07-03 Techlink  
Singapore 417818

Tel: +65 6547 4935

### The Americas

10097 Cleary Boulevard  
Suite 114 Fort Lauderdale  
Florida 33324  
United States

Tel: +1 954 472 5445

### Europe

Montnegre 18-24 Local 2  
Baixos 08029 Barcelona  
Spain

Tel: +34 93 539 6819

Email: [sales@pixelmetrix.com](mailto:sales@pixelmetrix.com)

Web: <http://www.pixelmetrix.com>

Copyright © 2011 Pixelmetrix Corporation

All other product or service marks are the property of their respective owners.