

The Pixelmetrix DVStation allows operators to do in-depth analysis and monitoring of RF networks. To reduce the learning curve and to improve operator productivity for tasks such as channel selection, the DVStation can be configured with aliases for commonly used DVB-T and DVB-C RF channels. The DVStation ships with channel plans to serve as templates - but operators can add their own custom channel maps easily with knowledge of basic XML.

OVERVIEW

The default channel selection table (Figure 1) in the RF interfaces of the DVStation platform can be customized and extended with a simple edit of an XML file. This file is located on the DVStation at - /usr/local/dvstation/etc/channeltable.xml.

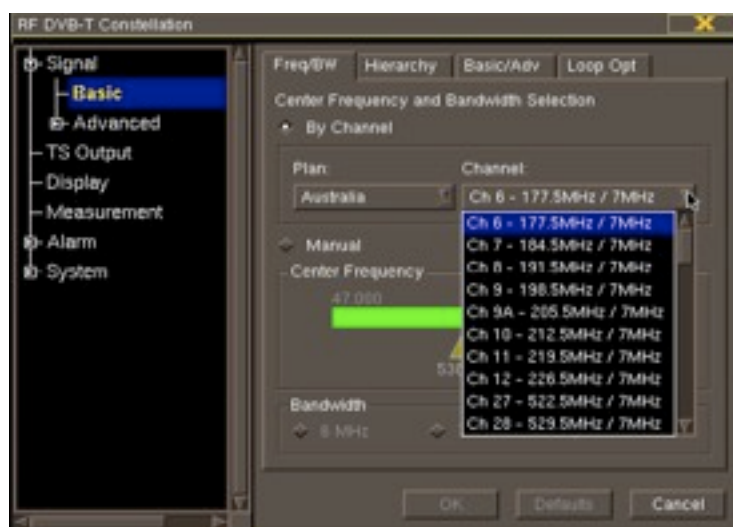


Figure 1: Channel Selection

To access this file:

Open a telnet session into the DVStation. Login to the machine with the username **dvstation** and the corresponding password.

Once in, change to administrator mode by typing **su** followed by the root password.

Change to the directory containing the channel selection template with the **cd /usr/local/dvstation/etc/** command.

Save a copy of the default configuration file (**channeltable.xml**) for recovery with the command - **cp channeltable.xml channeltable.xml.old**

Open the **channeltable.xml** file in the vi editor.

Once this file has been modified, and saved, please restart the DVStation for the changes to be reflected on the GUI.

Please do not hesitate to contact support@pixelmetrix.com for any clarification on this procedure.

FILE STRUCTURE

The file has a pre-loaded selection of channels. In the example below, the text that has been **emphasized** are place-holders to be customized. The channel list follows the template as below:

```
<channeltable>
  <card type="CardType">
    <zone name="ZoneName">
      <channel>
        <name>Channel Name - Frequency</name>
        <number>Channel number / name</number>
        <frequency>Frequency</frequency>
        <bandwidth>6/7/8</bandwidth>
      </channel>
      <channel>
        <name>Channel Name - Frequency</name>
        <number>Channel number / name</number>
        <frequency>Frequency</frequency>
        <bandwidth>6/7/8</bandwidth>
      </channel>
    </zone>
    <zone name="ZoneName">
      <channel>
        <name>Channel Name - Frequency</name>
        <number>Channel number / name</number>
        <frequency>Frequency</frequency>
        <bandwidth>6/7/8</bandwidth>
      </channel>
      <channel>
        <name>Channel Name - Frequency</name>
        <number>Channel number / name</number>
        <frequency>Frequency</frequency>
        <bandwidth>6/7/8</bandwidth>
      </channel>
    </zone>
    ...More Zones...
  </card>
  ...More Cards...
</channeltable>
```

QUICK TIPS:

To add:

1. A new card type, add a new `<card type="CardType">...</card>` block and then populate it with one or more Zone blocks. Possible values for CardType are QAM or COFDM (in the case of COFDM or DVB-T).
2. A add a new geographic zone, add a new `<zone name="ZoneName">...</zone>` block, and fill it with one or more Channel blocks. This is the field that will appear in the Plan: drop-down list (see Figure 1).
3. A new channel, add a new `<channel>...</channel>` with the following sub-fields in them. The drop-down list entry for the channel will be constructed as **Name - Frequency MHz / Bandwidth MHz**. See Figure 1.
 - Name: The common name of the channel.
 - Frequency: The frequency to tune to.
 - Bandwidth: The channel bandwidth.

KEY CUSTOMERS

Pixelmetrix enjoys an equal distribution of customers among the world's geographic regions. We have product deployed on all seven continents, including Antarctica.

Key clients of Pixelmetrix include:

- Turner Entertainment (CNN, TCM, et al)
- ESPN
- HBO
- Canal+
- NTT
- Telstra
- NHK
- BBC
- SBC, and others

ABOUT PIXELMETRIX

Pixelmetrix Corporation is the global expert in Preventive Monitoring for digital, cable and IPTV networks. The company provides equipment and network intelligence systems to television broadcasters for the management and monitoring of quality of service and quality of experience. Headquartered in Singapore, Pixelmetrix has offices in the United States and Europe.

Pixelmetrix has been conferred the Frost & Sullivan Industrial Technologies Award 2009, C+T Technology Development Award 2009, Engineering & Technology Emmy® Award 2007, Broadcast Engineering publication Pick Hit Award 2005 and 2008, TV Technology publication STAR Awards (Superior Technology Award Recipient) 2000, 2004 and 2007, BIRTV Product of the Year Award 2006, Cable-Satellite/Mediicast Product of the Year Awards 2003 and 2004, as well as the Peter Wayne Award 2000, for Best Design and Innovation.

For More Information

To learn more about the DVStation, request a demo, or learn how Pixelmetrix might help you optimize video network integrity, contact us today!

Pixelmetrix Corporation

31 Kaki Bukit Road 3
#07-03 Techlink
Singapore 417818

Tel: +65-6547-4935
Fax: +65-6547-4945

email: info@pixelmetrix.com

North American Sales & Support

10097 Cleary Boulevard
Suite #114 Ft. Lauderdale
Florida 33324, USA 33324

Tel: 954-472-5445
Fax: 954-472-6989

European Sales & Support

Affolternstrasse 47a
8913 Ottenbach
Switzerland

Tel: +41 56 6410 317
Fax: +41 56 500 0161

Copyright © 2010 Pixelmetrix Corporation

All other product or service marks are the property of their respective owners.

Asia Pacific: +65-6547-4935