



## DVProbe-C

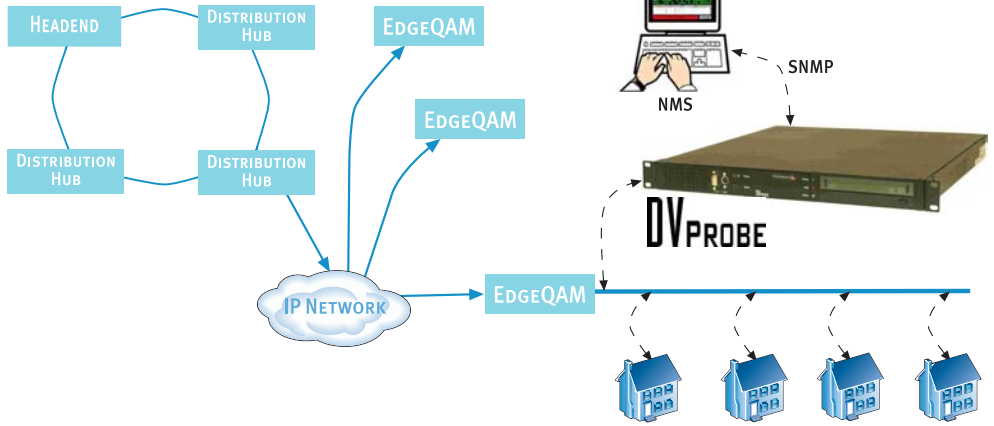
### PROVIDING LAST-MILE VISIBILITY IN DYNAMIC CABLE NETWORKS

Modern cable network spanning large geographic areas often multiplex local content together with national program feeds to provide greater programming diversity which cater to local interests. This practice can result in a large number of channel line up configurations - eg. having different channel numbers for the same movie channel in different cities.

Furthermore, since merging local and national content is usually done at remote, unattended facilities, there is a further risk that mistakes can be made. Effective monitoring is essential to ensure the broadcast stream meets engineering expectations. Embedding a fully featured, remotely controllable MPEG stream analyzer into the network is the best way to resolve problems quickly and avoid expensive truck rolls.

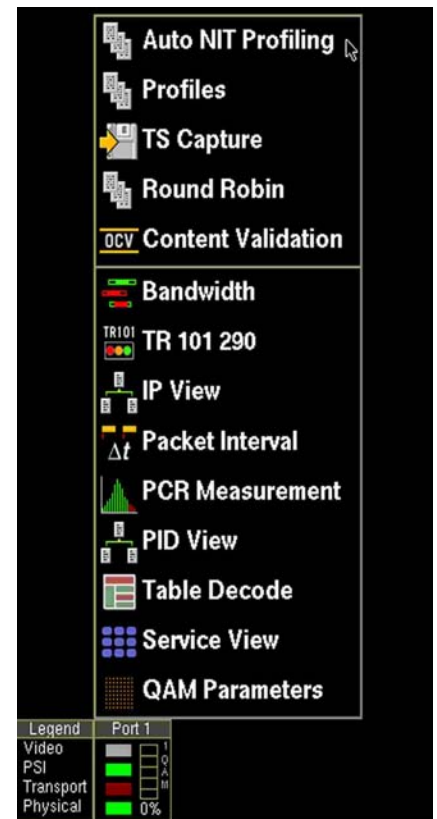
The Pixelmetrix DVProbe-C is the ideal preventative monitoring and operational debugging tool. It connects directly to the QAM RF cable network and uses the award winning Pixelmetrix DVStation transport stream analysis technology. Packaged as a 1RU rack-mount system with power, network and RF input connections all on the back of the unit, it integrates easily even into space-conscious environments.

A flexible software-based system built on open standards, the DVProbe-C can evolve with the network as digital cable systems move towards technologies like SDV and beyond.



### KEY FEATURES

- Monitor EdgeQAMs and SDV delivery networks for correct channel line-up at any point in time with little configuration input
- Low cost for quantity deployment
- Comprehensive transport stream compliance and health checks
- Integrate multiple DVProbe units into an NMS for consolidated alarm reports
- QAM scanning with automatic service line-up verification
- Automatic test template generation from NIT information
- Capture any segment of the transport stream for later analysis
- Remotely view MPEG-2/MPEG-4 video along with associated audio
- Compact 1RU module with a QAM input



## AGILE RECONFIGURATION CAPABILITY

The DVProbe-C can adapt to changing conditions in the operating environment using NIT information and EIS-MuxConfig interfaces.

The DVProbe-C can automatically acquire channel line-up information from the NIT and generate test templates from that.

The DVProbe-C can also retrieve transport stream configuration information from an EIS-MuxConfig compliant multiplexer for ease of configuration and flexibility.



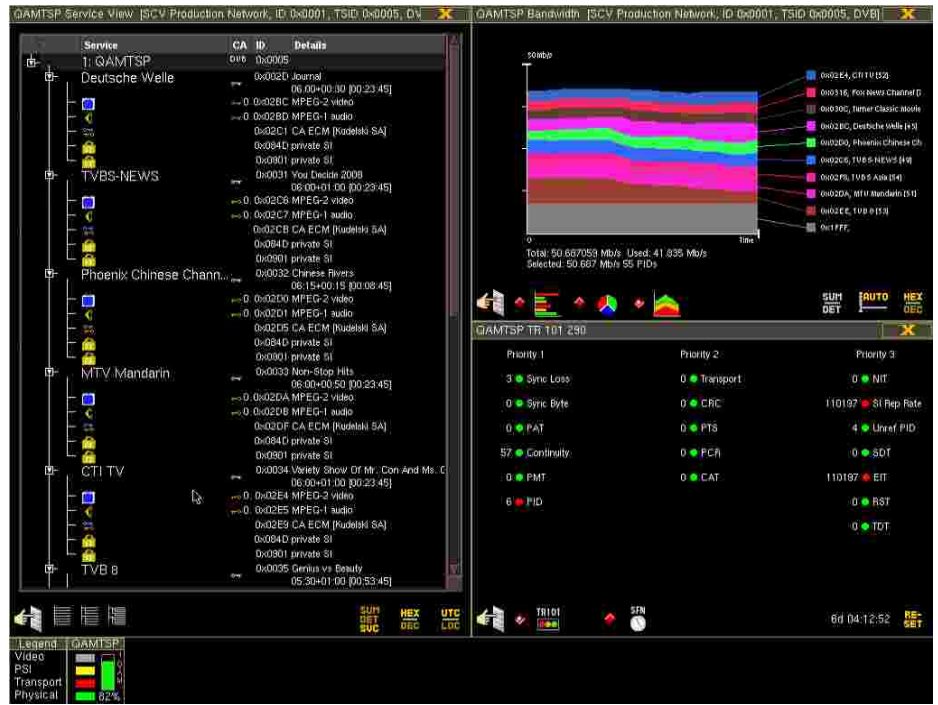
Automatic alarms on any deviation of content parameters. Unique TS snapshot auto-configuration mechanism.



DVProbe Front Panel



DVProbe Rear Panel



## SPECIFICATIONS

### System Interfaces

- Management Port
  - 10/100/1000 Base-T
  - RJ-45 Copper Connector
- Serial port
  - 9-pin DE-9P Connector
- 2x USB 2.0 Connector

### Control Interfaces

- HTML Web Browser
- VNC Remote Client

### Network Management

- SNMP MIB for NMS integration

### Input Interfaces

- QAM
  - Input power level: -50dBm to 0dBm
  - IEC Connector
  - F-type or BNC adaptor (factory options)

### Electrical Characteristics

- Power Input
  - 90-240 V AC; 47-63 Hz
- Current Requirement
  - 5.0A at 115 V AC Max
  - 2.5A at 230 V AC Max

### Mechanical Characteristics

- 1RU 19 inch rack-mountable
- Operating Temperatures
  - +10°C to +30°C
- Storage Temperature
  - 0°C to +50°C

### Mass Storage

- 160 GB SATA HDD

### Transport Stream Capture

- 128 MB TS capture capability

Distributor Contact

## Pixelmetrix Corporation

**Asia Pacific**  
31 Kaki Bukit Road 3  
#07-03 Techlink  
Singapore 417818  
Tel: +65 6547 4935  
Fax: +65 6547 4945

[www.pixelmetrix.com](http://www.pixelmetrix.com)

**The Americas**  
10097 Cleary Boulevard  
Suite 114 Fort Lauderdale  
Florida 33324, USA  
Tel: +1 954 472 5445  
Fax: +1 212 671 1549

**Europe**  
Moosstrasse 6  
CH 5443 Niederrohrdorf  
Switzerland  
Tel: +41 56641 0317  
Fax: +41 56500 0161

Ref: PPN30163  
Copyright © 2008 Pixelmetrix Corporation. All rights reserved.  
All other product or service marks are the property of the respective owners.  
Preventive Monitoring, DVStation, DVStation-Remote, DVStation-Pod, DVStation-IP, DVStation-Mini, DVStor, DVStorIP-Gen, DVShift, DVProbe-C, DPI Auditor, EndGame, Electronic Couch Potato, ECP Consolidator, VISUALmpeg and VISUALmpeg Quality are trademarks of Pixelmetrix Corporation.  
Data subject to changes without prior notice.

