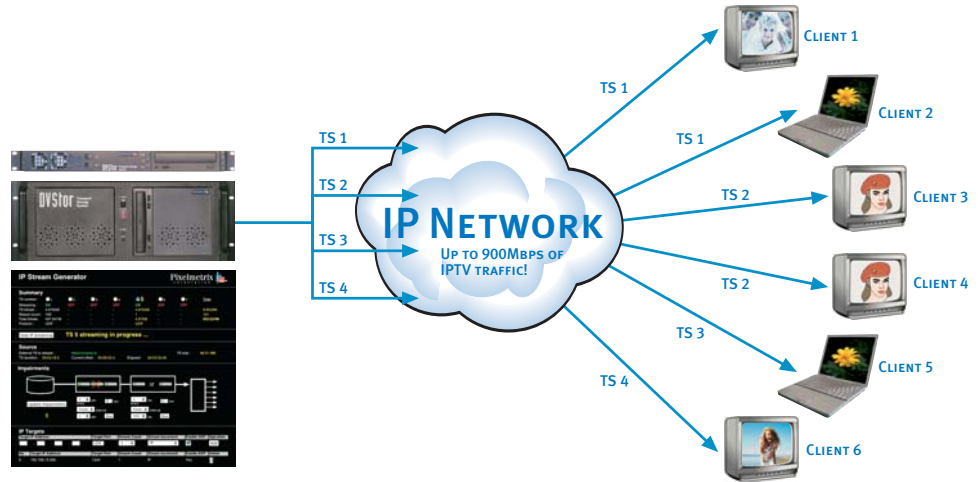
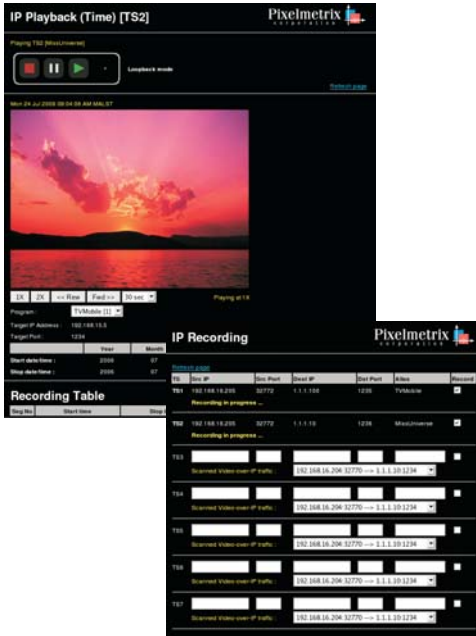




DVStorIP & DVStorIP-Gen (IPTV Test Stream Generator)



DVStorIP OVERVIEW

The DVStorIP is a hard disk-based system that allows non-stop simultaneous recording of multiple channels of transmitted IP video. DVStorIP allows broadcasters using Internet Protocol Television to verify that a specific transmission actually occurred at a given time. With DVStorIP, not only legal compliance can be sustained, but disputes can also be resolved promptly through transmission records check.

Video is recorded by specifying the source and destination IP addresses of the transmitted video. A continuous archive of recorded video is created in a "First In, First Out" (FIFO) basis. This means that outdated material is removed for fresh recordings. However, when necessary, selected segments can also be locked to prevent it from being removed or overwritten. The recorded IP video can be subsequently played back to any remote device with a video player.

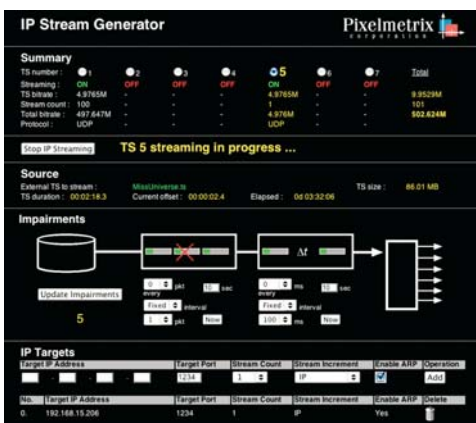
DVStorIP comes in both 1U and 4U configuration, with disk storage capacity ranging from 100GB to 4TB. Depending on usage, this could represent a few hours to a month of IP video storage.

DVStorIP-GEN OVERVIEW

The Pixelmetrix DVStorIP-Gen, or IPTV test stream generator, is a high-performance, cost-effective tool for the evaluation, compliance testing and verification of networks, monitoring and equipment analysis.

KEY FEATURES OF DVStorIP

- IP Recording (Multiple TS)
- IP Playback (Time)
- IP Playback (File)
- Locking of TS segment
- IGMP



TARGET USERS

- IPTV test/monitoring equipment manufacturers
- IPTV broadcasters
- Network providers
- IPTV products exhibitors at tradeshows

KEY APPLICATIONS

- Functional testing of analysis and monitoring equipment
- Load testing of monitoring equipment
- Load testing of network equipment
- IPTV video streaming server



KEY FEATURES OF DVSTORIP-GEN

- A user-friendly web-based GUI to control the IPTV test stream generator
- Generate up to seven unique transport streams simultaneously
- Generated transport stream can be
 - any segment of recorded transport stream in the DVStorIP
 - any arbitrary external transport stream file copied to the DVStorIP
- Generate up to 900Mbps of IPTV traffic
- Support both SPTS (single-program transport stream) and MPTS (multiple-program transport stream) generation
- Each generated transport stream can be forwarded to up to 100 target IP destinations, which is identified by the IP address and port number
- The target IP address can be unicast or multicast
- Transport stream can be streamed at the original bitrate, based on its PCR timestamp, or it can be streamed at user-defined bitrate. The PCR, PTS and DTS values are re-timestamped when streaming at user-defined bitrate
- Support both UDP and RTP streaming
- Restamping of continuity count and insertion of PCR discontinuity flag during transport stream loopback for error-free streaming
- Injection of different types of errors, or impairments, that can occur in the end-to-end delivery chain of an IPTV system, such as packet loss, packet delay, packet reordering, packet duplication and packet corruption.

SPECIFICATIONS

DVSTORIP 1U SYSTEM

CPU Platform

- 3.0 GHz Pentium IV processor
- 512 MB SDRAM

Auxiliary Interfaces

- VGA out, 800 x 600 resolution
- 10/100 BaseT LAN port for remote control
- 2 serial, 1 USB ports
- PS/2 keyboard/mouse
- 52x Slim CDR0M drive
- 100 – 500 GB

Recording Interface

- Gigabit Ethernet port
- 80 Mbps maximum recording rate
- 500 Mbps maximum input rate

Chassis Specifications

- 1U rack-mount
- Heavy duty steel chassis
- Dimensions
44mm(H) x 440mm(W) x 482.6mm(D)
- Weight: ~9kg

Electrical/Temperature

- 100 – 240 Vac, 50 – 60 Hz
- 80A max In-rush current
- Operating temperature: +10°C to 40°C
- Storage temperature: 0°C to 50°C

Regulatory

- CE Mark

DVSTORIP 4U SYSTEM

CPU Platform

- 3.0 GHz Pentium IV processor
- 512 MB SDRAM

Auxiliary Interfaces

- VGA out, 800 x 600 resolution
- 10/100 BaseT LAN port for remote control
- 2 serial, 1 parallel, 2 USB ports
- PS/2 keyboard/mouse
- 52x CDR0M drive
- 500 GB – 4 TB

Recording Interface

- Gigabit Ethernet port
- 80 Mbps maximum recording rate
- 500 Mbps maximum input rate

Chassis Specifications

- 4U rack-mount
- Standard: EIA 19-inch EIA (Electronic Industries Association)
- Heavy duty steel chassis
- Dimensions
Without mounting bracket:
178mm(H) x 422mm(W) x 531mm(D)
With side mounting brackets:
178mm(H) x 490mm(W) x 531mm(D)
- Weight: ~23kg (1 TB configuration)

Power Supply

- Dual ATX 300W 4U redundant power supplies

Electrical/Temperature

- 90 – 264 Vac, 47 – 63 Hz
- 5.0 A at 115 Vac, 2.5 A at 230 Vac, Max
- Operating temperature: +10°C to 40°C
- Storage temperature: 0°C to 50°C

Regulatory

- UL listed
- CE Mark

Distributor Contact

Pixelmetrix Corporation

The Americas

965 N. Nob Hill Rd.
#114 Ft. Lauderdale,
FL 33324
Tel: 954-472-5445
Fax: 954-472-6989

Asia Pacific

31 Kaki Bukit Road 3
#07-03 Techlink
Singapore 417 818
Tel: +65 6547 4935
Fax: +65 6547 4945

Europe

Haldenstrasse 24
CH 8967 Widen, AG
Switzerland
Tel: +41 79742 7454
Fax: +41 86079 742 7454

www.pixelmetrix.com

Ref: PPN30145

Copyright © 2006 Pixelmetrix Corporation. All rights reserved.

All other products or service marks are the property of their respective owners.

The terms Preventive Monitoring, DVStation, DVStation-Remote, DVStation-Pod, DVStation-IP, DVStation Mini, DVStor, DVStor-IP, DVShift, DPI Auditor and VISUALmpeg are trademarks of Pixelmetrix Corporation.

Data subject to change without prior notice.

