



IP110

- IP Solution for the DVStation-210™ & DVStation-Remote™

HIGH PERFORMANCE MONITORING

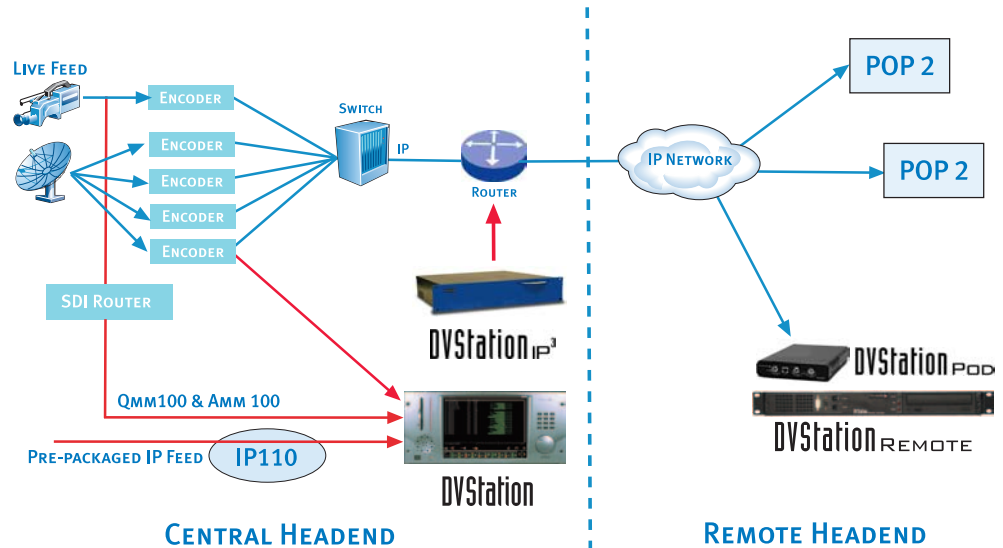
The IP110, a comprehensive solution suite for detailed MPEG over IP analysis for the award-winning DVStation™ and DVStation-Remote™ product family. The new IP solution expands Pixelmetrix integrated headend monitoring offerings with added flexibility to monitor a mix and match of Satellite, Cable, Terrestrial and IP signals within the same platform, simply by installing different line interface cards.

APPLICATIONS

The IP110 is a single stop MPEG over IP operational monitoring solution for multiple applications - deployment for IP headend contribution monitoring in IP point-to-point core networks and in a distributed environment, such as the emerging digital switched video scenarios. IP110 validates the integrity of transmission at every layer of the protocol stack, including Physical, IP, transport and content.

KEY FEATURES - IP100 LIF

- IP Interface to the DVStation-210™/DVStation-Remote™
- Full Gigabit Ethernet video traffic input
- Support for MPTS/SPTS
- IGMP v3 support with source address selection
- Supports UDP/RTP encapsulation
- Transport Stream packet sizes: 188/204/208 bytes
- Unified look and feel of the DVStation product family
- End-point mode (at release time) and Tap mode
- MDI and IP Bandwidth measurements on one stream
- Round Robin Mode
- IP Forwarding
- HTML, SNMP, X-Window and CORBA Remote Control
- Support for VLAN



MPEG OVER IP MONITORING IN DVSTATION-210™ & DVSTATION-REMOTE™

The IP110 solution for DVStation™ and DVStation-Remote™ is packed with the capability to receive Gigabit IP video traffic and perform in-depth MPEG-2 transport stream analysis on a single stream. Bandwidth measurements, MDI (Media Delivery Index), TR 101 290 health checks, video freeze and blackout detection, content layer analysis and On-air Content Validation (OCV™) are some of the stellar features of the complete package.

A unique feature of the IP110 solution is the support for End-point, Tap mode, and IP forwarding. The IP forwarding allows the channeling of the selected transport stream to any remote location over the IP network for confidence monitoring. The Tap mode and End-point modes provide users with the flexibility to place the monitoring station in between two locations to sniff and pass through complete traffic to the destination, or place it at the end of a point-to-point link.

The Interface also supports a full implementation of the IGMPv3 protocol to Join/Leave multicast IP traffic along with source address specification.

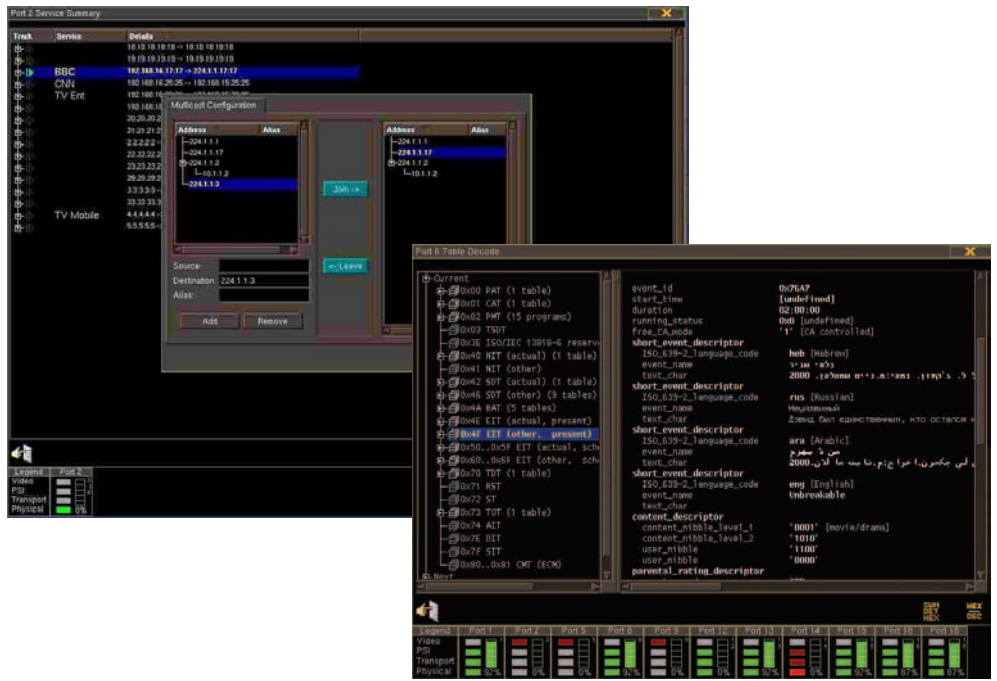
The IP110 is in sync with the philosophy of Pixelmetrix suite of test and monitoring systems for its ability to display configured thresholds and trigger alarms for any threshold mismatch on monitored parameters with full support for SNMP as the northbound open interface to network management systems.



COMPREHENSIVE TRANSPORT STREAM MONITORING

The IP110 solution is capable of performing comprehensive real-time transport stream operational monitoring tests.

- TR 101 290 health checks, priorities 1, 2 and 3
- MPEG-2 Video Thumbnails with freeze and blackout detection
- Bandwidth of services and individual PIDs
- Automatic On-air Content Validation (OCV)
- PCR Measurements
- Table decoding
- MIP Tests (Timing, Structure, Presence, Pointer, Periodicity and TS rate)



ALARMS & REMOTE ACCESS

All measured parameters can be monitored unattended through user-definable alarms. The comprehensive DVStation Alarm Sub-System can trigger actions that include log entries, audible alarms, SNMP traps, contact closures, transport stream recording as well as user-programmable actions (email notifications, SMS paging, etc).

All configuration parameters can be accessed via the local DVStation GUI, HTML browser, VNC, X window system, SNMP Client or CORBA compliant management system.

| SOLUTION PACKAGES | IP100 (DVSTATION-210™) | IP110 (DVSTATION-210™) | REM-IP100 (DVSTATION-REMOTE™) | REM-IP110 (DVSTATION-REMOTE™) |
|-----------------------------------|------------------------|-------------------------|-------------------------------|-------------------------------|
| FORM FACTOR | CARD1 | CARD1 - 2 CARDS | REM-POD | REM-POD- 2 PODS |
| INPUT | GIGABIT ETHERNET | GIGABIT ETHERNET OR ASI | GIGABIT ETHERNET | GIGABIT ETHERNET OR ASI |
| MEDIA DELIVERY INDEX (MDI) | YES | YES | YES | YES |
| IP BANDWIDTH | YES | YES | YES | YES |
| ROUND ROBIN | YES | YES | YES | YES |
| IGMPV2/V3 SUPPORT | YES | YES | YES | YES |
| IP FORWARDING | YES | YES | YES | YES |
| TAP MODE/END-POINT MODE | YES | YES | YES | YES |
| TS ANALYSIS | | | | |
| TR 101 290 | No | Yes | No | Yes |
| VIDEO FREEZE & BLACKOUT DETECTION | No | Yes | No | Yes |
| PCR MEASUREMENT | No | Yes | No | Yes |
| TABLE DECODE | No | Yes | No | Yes |
| ON-AIR CONTENT VALIDATION (OCV) | No | Yes | No | Yes |
| VIDEO THUMBNAILS | No | Yes | No | Yes |

Distributor Contact

Pixelmetrix Corporation

The Americas
 10097 Cleary Boulevard
 Suite 114 Fort Lauderdale
 Florida 33324 USA
 Tel: +1 954 472 5445
 Fax: +1 954 472 6989

Asia Pacific
 31 Kaki Bukit Road 3
 #07-03 Techlink
 Singapore 417 818
 Tel: +65 6547 4935
 Fax: +65 6547 4945

Europe
 Moosstrasse 6
 CH 5443 Niederrohrdorf
 Switzerland
 Tel: +41 56641 0317
 Fax: +41 56500 0161

www.pixelmetrix.com

Ref: PPN30154
 Copyright © 2007 Pixelmetrix Corporation. All rights reserved.
 All other products or service marks are the property of their respective owners.
 Preventive Monitoring, DVStation, DVStation-Remote, DVStation-Pod, DVStation-IP, DVStation Mini, DVStar, DVStarIP, DVStarIP-Gen, DVShift, DPI Auditor, EndGame, Electronic Couch Potato, ECP Consolidator, Video Validator and VISUALmpeg are trademarks of Pixelmetrix Corporation.
 Data subject to changes without prior notice.

